



Note: (1) Think and Answer (2) Mind Choices

Name:

Date:

Areas of Improvement:

Maximum Marks (objective)	
Marks Obtained	
%	
Maximum Marks (Subjective)	
Marks Obtained	
%	
Maximum Marks	
Marks Obtained	
%	

Previous Performance:

Date	Subject	Chapter	%
1 July 2024	Chemistry	Matter	68.97 %
10 July 2024	Math	Rational Number	Forfeit
29 July 2024	Math	Square and Square Roots	11.54%

Parent Signature	Parent Signature



Section A (Objective Question)

[6 Marks]

A. Multiple Choice Questions

[0.5 x 6 = 3]

Q1. Read the following terms and select the pair related to the characters' inheritance.

- (a) cell wall and cell membrane (b) chromosome and mitochondria
(c) chloroplast and cell membrane (d) chromosome and genes

Q2. Choose the correct statement:

- (a) Genes are located in the chromosomes. (b) The cell is located in the nucleus.
(c) Chromosomes are located in the nucleolus. (d) Cell membrane surrounds the nucleus.

Q3. The thread-like structures present in the nucleus are

- (a) nucleolus (b) chromosomes (c) genes (d) ribosomes

Q4. Under a microscope, Paheli observes a cell that has a cell wall but no distinct nucleus. The cell that she observes is

- (a) a plant cell (b) an animal cell (c) a nerve cell (d) a bacterial cell

Q5. Cheek cells do not have _____

- (a) cell membrane (b) nucleus (c) golgi apparatus (d) plastids

Q6. Identify the correct statement about cells.

- (a) All the cells have a nucleus. (b) Cells of an organ have similar structures.
(c) Cells of tissue have a similar structure. (d) The shape of all types of cells is round.

B. Very Short Answer Questions

[0.5 x 2 = 1]

Q1. In leaves, name the cell organelle and pigment that is responsible for green colour.

Q2. In a cell, where are the genes located?

C. Match the terms given in column I with their functions given in column II and fill in the blanks given below the table:

[0.5 x 4 = 2]

Column I	Column II
A. Chloroplast	i) Carries hereditary characters.
B. Cell membrane	ii) Controls the activities of cells.
C. Nucleus	iii) Site of photosynthesis.
D. Chromosome	iv) Controls the movement of materials into and out of cells.



Section B

II. Short Answer Questions (Any 6 questions only)

[2 x 6 = 12]

Q1. Where are chromosomes found in a cell? State their function.

Q2. “Cells are the basic structural units of living organisms”. Explain.

Q3. Explain why chloroplasts are found only in plant cells.

Q4. What are the functions of the cell wall in plant cells?

Q5. Cells consist of many organelles, yet we do not call any of these organelles a structural and functional unit of living organisms. Explain.

Q6. Name the part of the cell concerned with the following?

1. Liberation of energy
2. Synthesis of proteins
3. Transmission of heredity characters from parents to offspring
4. Initiation of cell division
5. Hydrolytic in function
6. Entry of only certain substances into and out of the cell.

Q7. Mention three features found only in plant cells and one found only in animal cells.

Q8. State the differences between Plant and Animal Cell.

Section C

III. Long Answer Questions

[3 x 2 = 6]

Q9. State the major functions of the following-

1. Plasma membrane
2. Ribosome
3. Mitochondria
4. Golgi apparatus
5. Cytoplasm
6. Chromosomes
7. Vacuoles



Q10. State the difference between eukaryotes and prokaryotes.

IV. Picture Study:

[8 marks]

Q11. Label the parts A to E in the given Fig. 8.2 diagram.

[2 x 1 = 2]

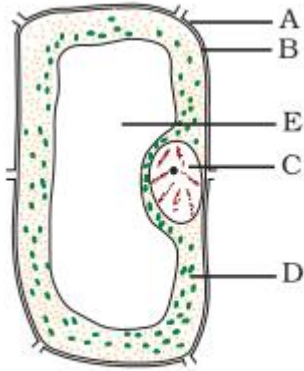
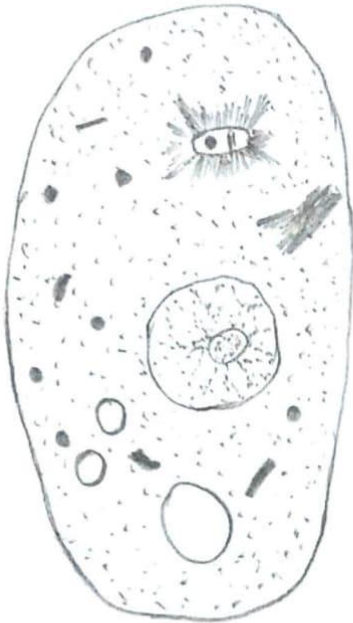
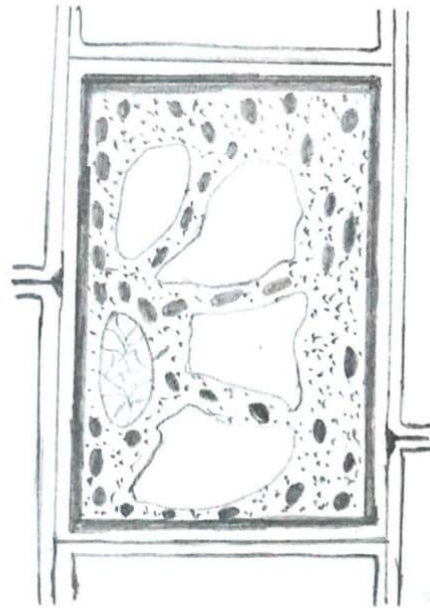


Fig. 8.2

Q12. Given below are the sketches of two types of cells A and B.



A



B

(a) Which one of these is a plant cell? Give a reason in support of your answer.

[1 x 1 = 1]

(b) List the cell structures which are common to both types.

[2 x 1 = 2]

(c) Name the structures found only in plant cells and those found only in animal cells.

[3 x 1 = 3]